

# **BWB BriteCor Wet Location Brik Series Installation Manual**



## NOTES

- WARNING – Risk of fire or electric shock.
- WARNING - It is recommended that installation be performed by a certified electrician.
- All electrical connections must be in compliance with local codes, ordinances or the national electrical code (NEC). Contact your municipal building department to learn about your local codes, permits and/or inspections.
- Do not connect this Luminaire to an electrical system that does not provide means for equipment grounding. Never use a fixture in a two-wire system that is not grounded.
- If dimming functionality is included, use only with Litesheet approved dimmers.
- This unit is not approved for use in ducted ceilings.
- Do not use excessive force when manipulating cables and wires.
- WARNING – To prevent wiring damage or abrasion, do not pinch wires between surfaces.
- WARNING – Only connect Luminaire to the voltage indicated by the Luminaire label. It is intended for direct connection to this voltage. DO NOT connect to a different or unknown voltage.
- Enclosure is rated for Wet Location and IP66. When installing incoming connections, all wire ports must be sealed using similar rated hardware to maintain Wet Location and IP66 rating.

|                      |        |                 |
|----------------------|--------|-----------------|
| Document #: 11-00030 | Rev: A | Date: 5/21/2019 |
|----------------------|--------|-----------------|

### **CONTENTS OF KIT**

- BWB Wet Brik
- (Optional) Mounting Brackets

### **TOOLS AND ADDITIONAL PARTS REQUIRED**

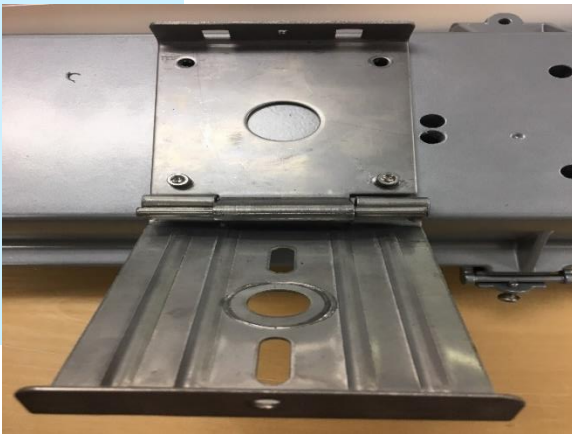
- P2 Philips Head Screwdriver / Drill
- Flat Head Screwdriver
- 3/8" Drive

## **Preparation**

1. Turn off power source.
2. Drill and attach mounting screws to mounting surface.

## **Installation (Flip Bracket)**

1. Mount the luminaire to the mounting surface using the provided brackets.

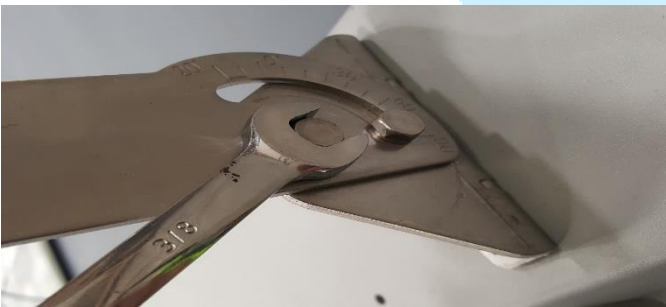


2. Lock the bracket in place using the #8-32 side screw.



## Installation (Adjustable Bracket)

1. Mount the luminaire to the mounting surface using the attached brackets.
2. Adjust the angle of the luminaire to the desired position. Tighten the 3/8" bolts of the bracket to lock the luminaire in place.



Document #: 11-00030

Rev: A

Date: 5/21/2019

## Wiring Guide

---

1. Temporarily remove the (3) screws from the front of the luminaire. Loosen the 3 screws in the back luminaire.



2. Remove the PG 13.5 end cap from the fixture. Insert incoming power wires/ cable. Reseal the wire port with IP66 or Wet Location rated hardware (not included.)



3. Connect the incoming ground connection to the green ground wire provided. Connect the incoming line power to the luminaire disconnect provided.
  - Black – Line Power (Hot)
  - White – Neutral
  - Green – Safety Ground
4. Close the luminaire lid and reinsert the machine screws. Tighten the screws fully to ensure a tight seal.



**For warranty information and  
technical support, contact us at:**

**+1 (434) 446-1460**

**Find more great products at:**

**<https://www.litesheet.com/>**